

BAR-TEK

BAR-TEK® Upgrade Fuel Pump Installation Instructions



Kit Contents:

- BAR-TEK® Upgrade Pump
- 3x O-Ring
- Kraftstoffschlauch
- 2x Schlauchschelle

Required tool:

- Sharp blade
- Montier Eisen
- Side cutters
- M6 Nut
- 1/4" Ratchet
- Torx 20 Nut

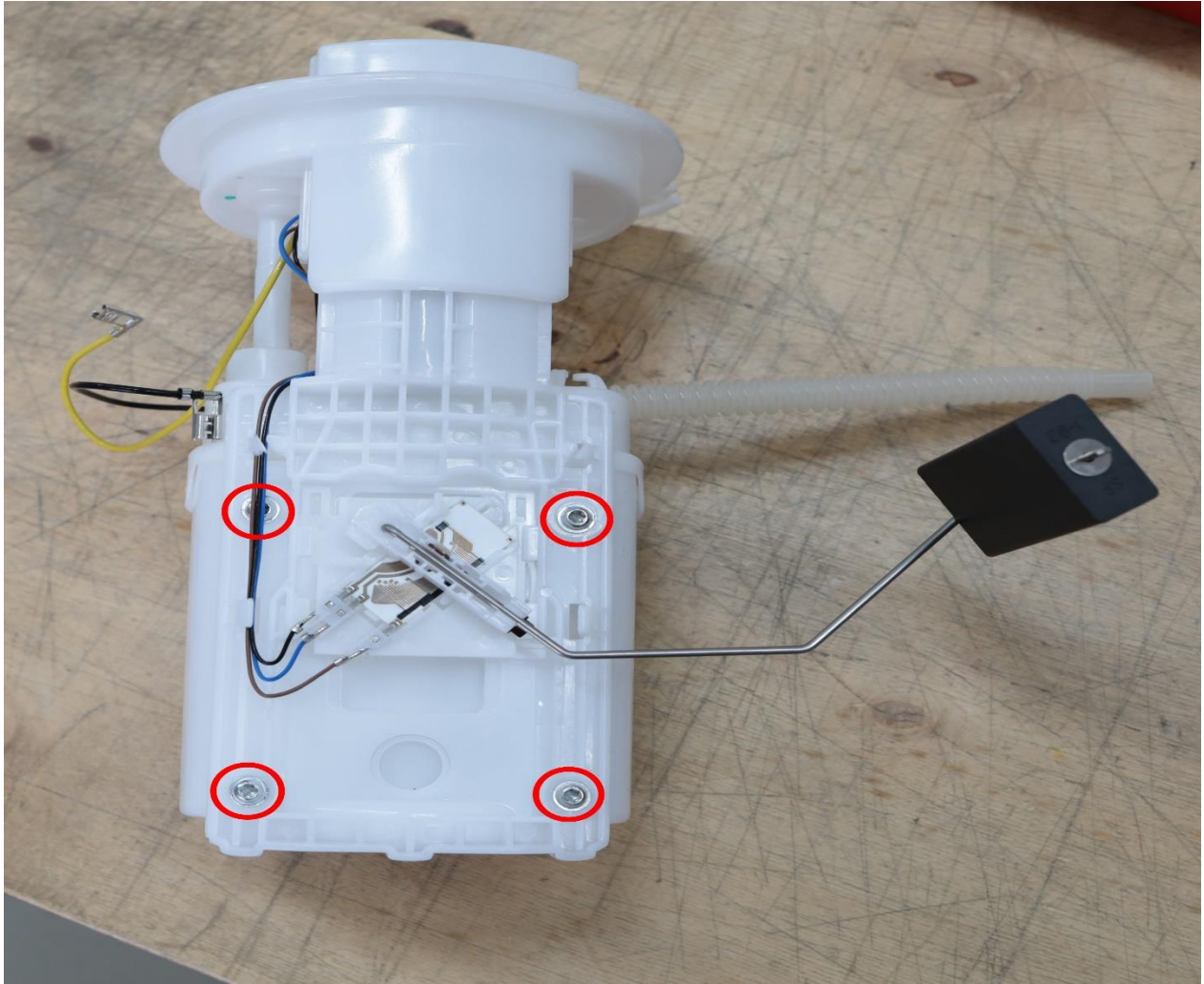
1. Unplug the 2 plugs of the pump (1), and pull the cables out of the cable routing (2).



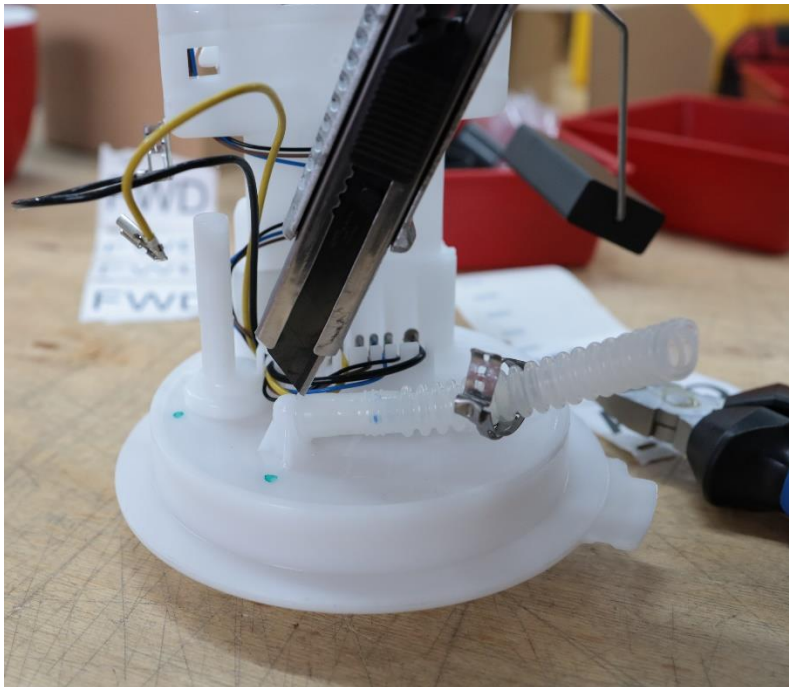
2. Snap the linethrough with the side separator and release the clamp at the top of the pump basket from the hose.



3. Loosen the 4 Torx 20 screws on the back of the pump.



4. Now carefully separate the fuel hose from the pump basket with a longitudinal section.

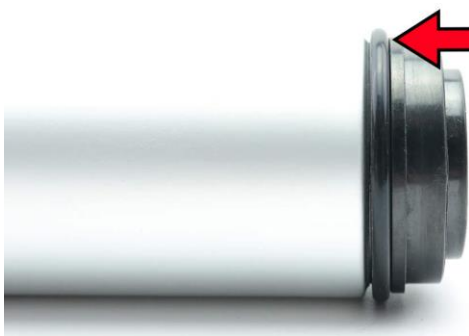


5. Now release the lid of the pump basket by clipping out the 4 clips.



- 6. Now the old pump is dismantled and the enclosed 3 O-rings are mounted on the upgrade pump, pay attention to the correct assembly!

Achtung! BAR-TEK Kraftstoffpumpe O-Ring Installation



Durch das Falsche montieren des O-Rings kann die Öffnung an der Pumpe Verstopfen, dies führt zum Schaden an der Kraftstoffpumpe

Incorrect installation of the O-ring can result clog the hole on the pump, this will result damage to the fuel pump

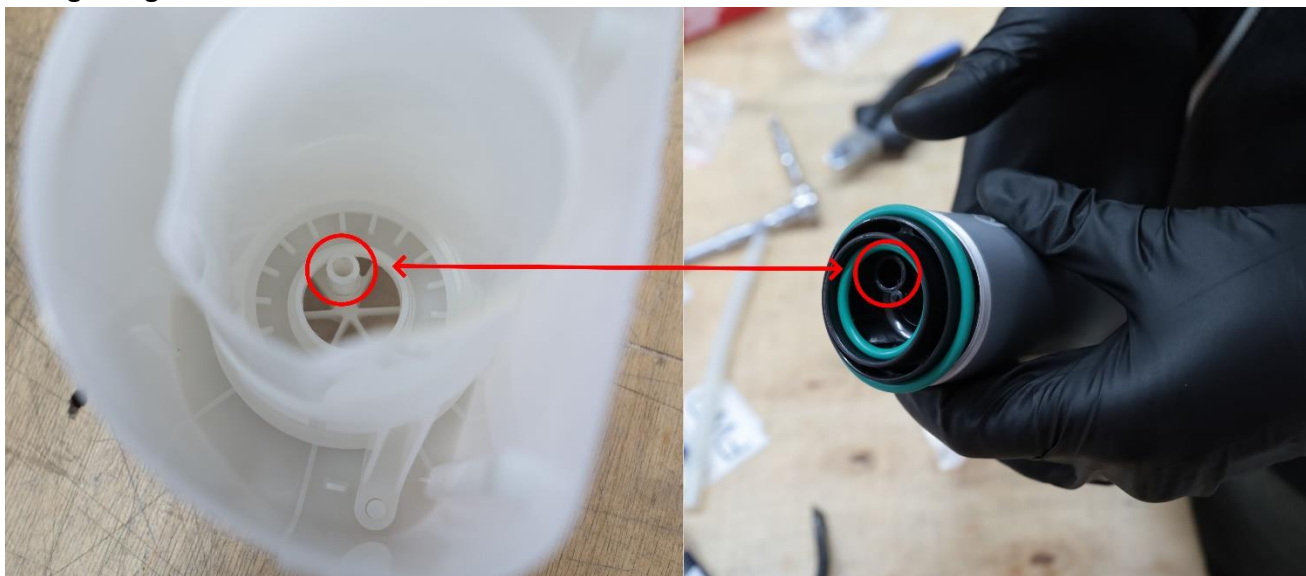


Durch die richtige Montage des O-Rings wird die Öffnung nicht verschlossen und die Kraftstoffpumpe kann Kraftstoff ansaugen.

By properly assembling the O-ring the hole is not closed and the Fuel pump can draw in fuel.



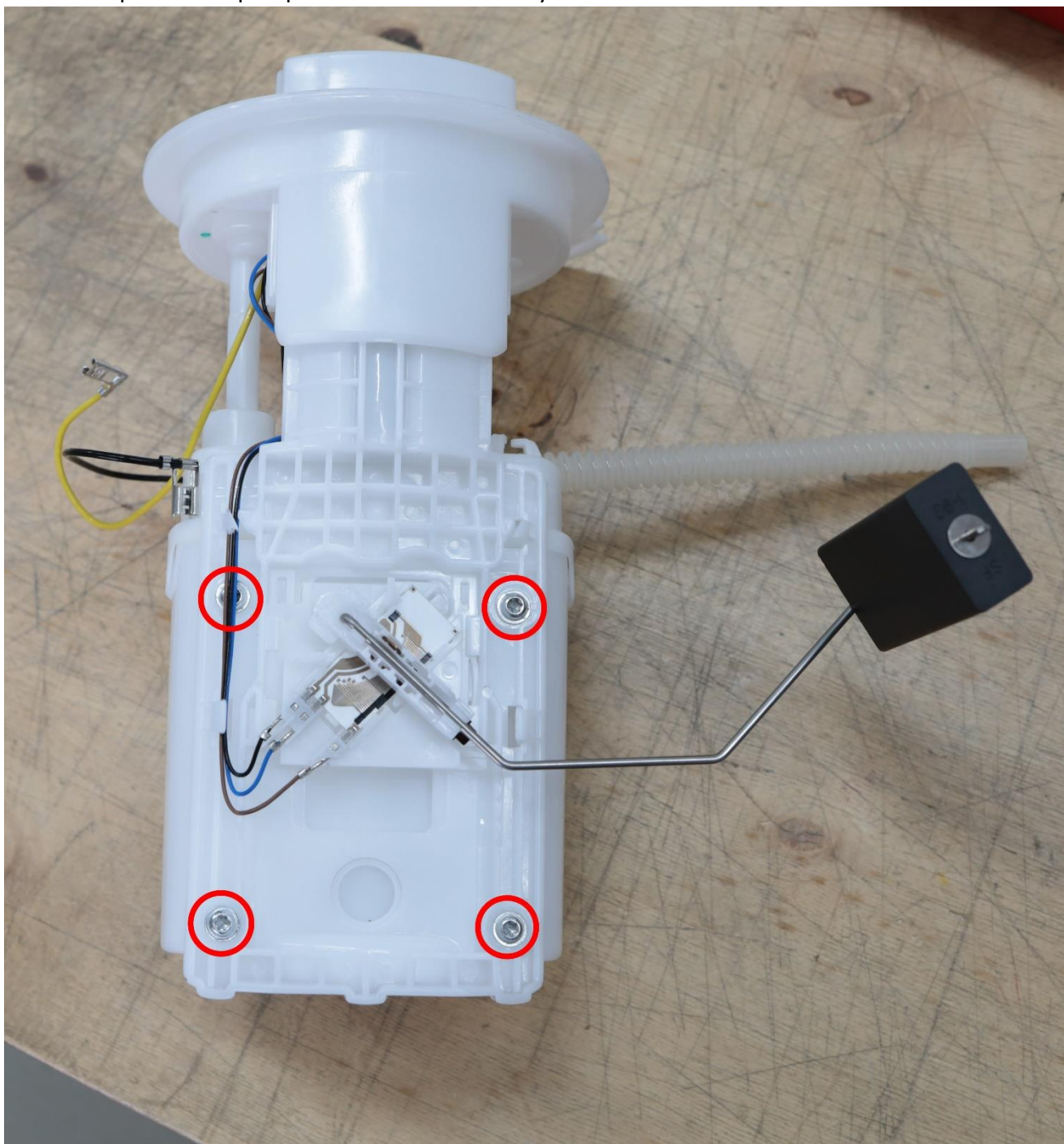
- 7. Now insert the upgrade pump into the pump basket and make sure that both openings are brought together.



8. Now clip the lid of the pump basket back in and attach the enclosed fuel hose by means of the hose clamp.



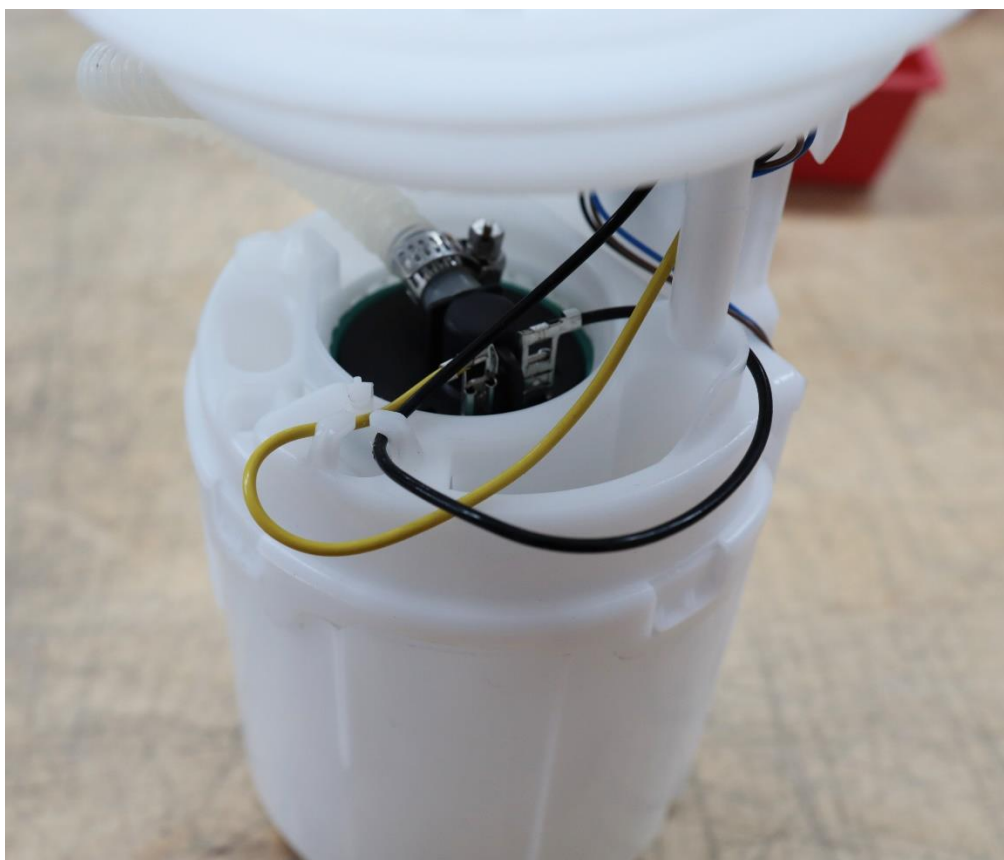
9. Now the 2 part of the pump basket is reattached by means of the 4 Torx 25 screws.



10. The fuel hose is now attached to the pump basket with the enclosed hose clamp.



11. Now the cables are plugged back into the pump while paying attention to the cable routing it should now look like this:



12. FOR EVERYONE WITH AN ALL-WHEEL DRIVE:

The now not yet occupied pump exhaust must now be connected to the 2nd fuel tank with the original hose.

