

TTRS/RS3 2.5TFSI LPFP

DAZA/DNWA TTRS RS3 PNP kit support 1000HP

BAR-TREK[®]



Notes:

When disassembling the car, be sure to keep all fasteners so they can be reused. It is recommended that you get some kind of compartmented tray to organize the fasteners, such as a fishing tackle box or several large ice cube trays. All directions used in this manual (right, left, front, etc.) are based on if you were sitting in the driver seat of the car.

These instructions assume that you have basic mechanical skills and several varieties of basic hand tools in order to install the kit. If you have any questions about the installation, feel free to contact our Bar-Tek representative.



Remove the four plastic buckles
from the back seat of your car



Remove the back seat





Remove the plastic lid



Take off the two plugs and pipe from fuel pump



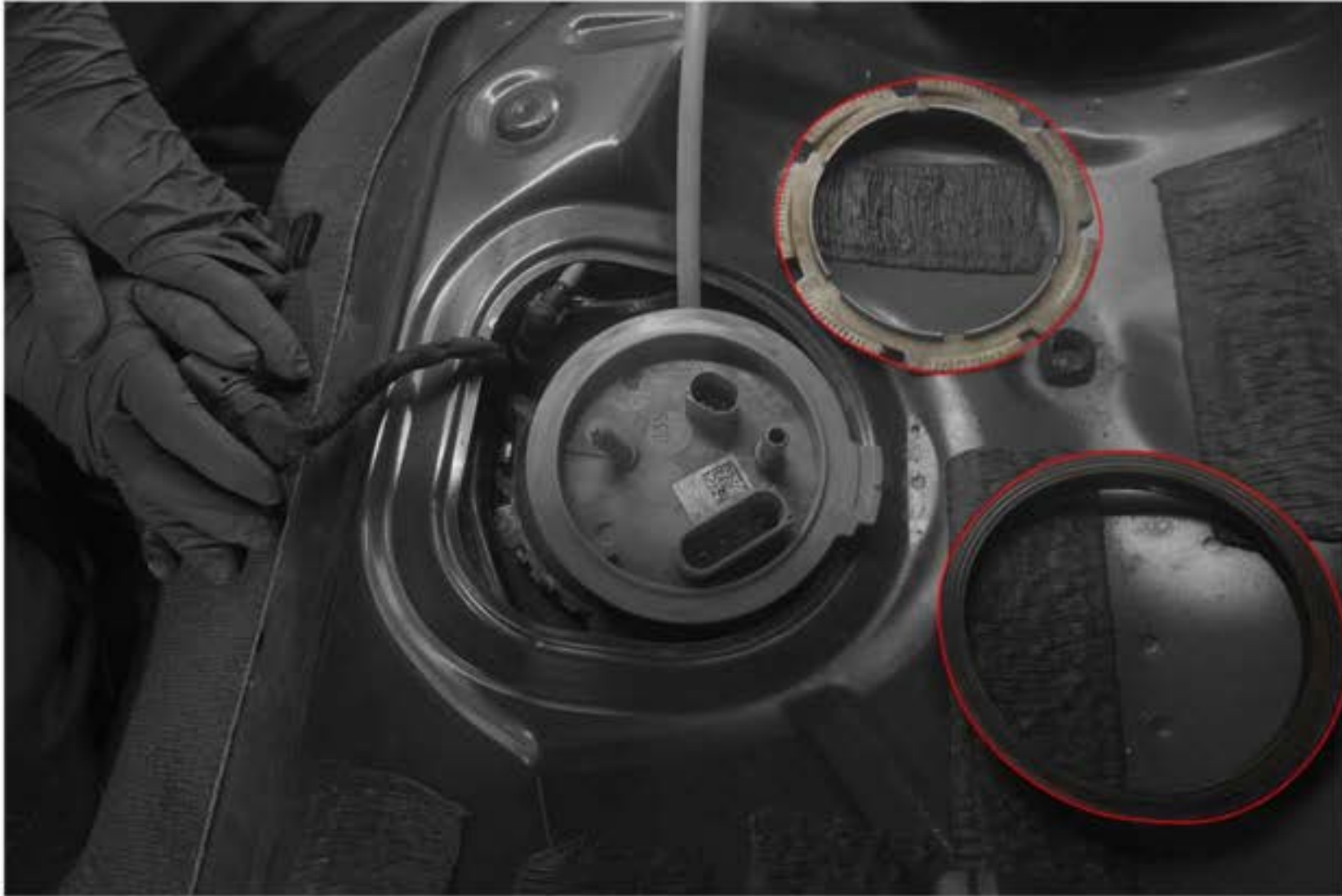


Remove the clamping plate



Take out the O Ring

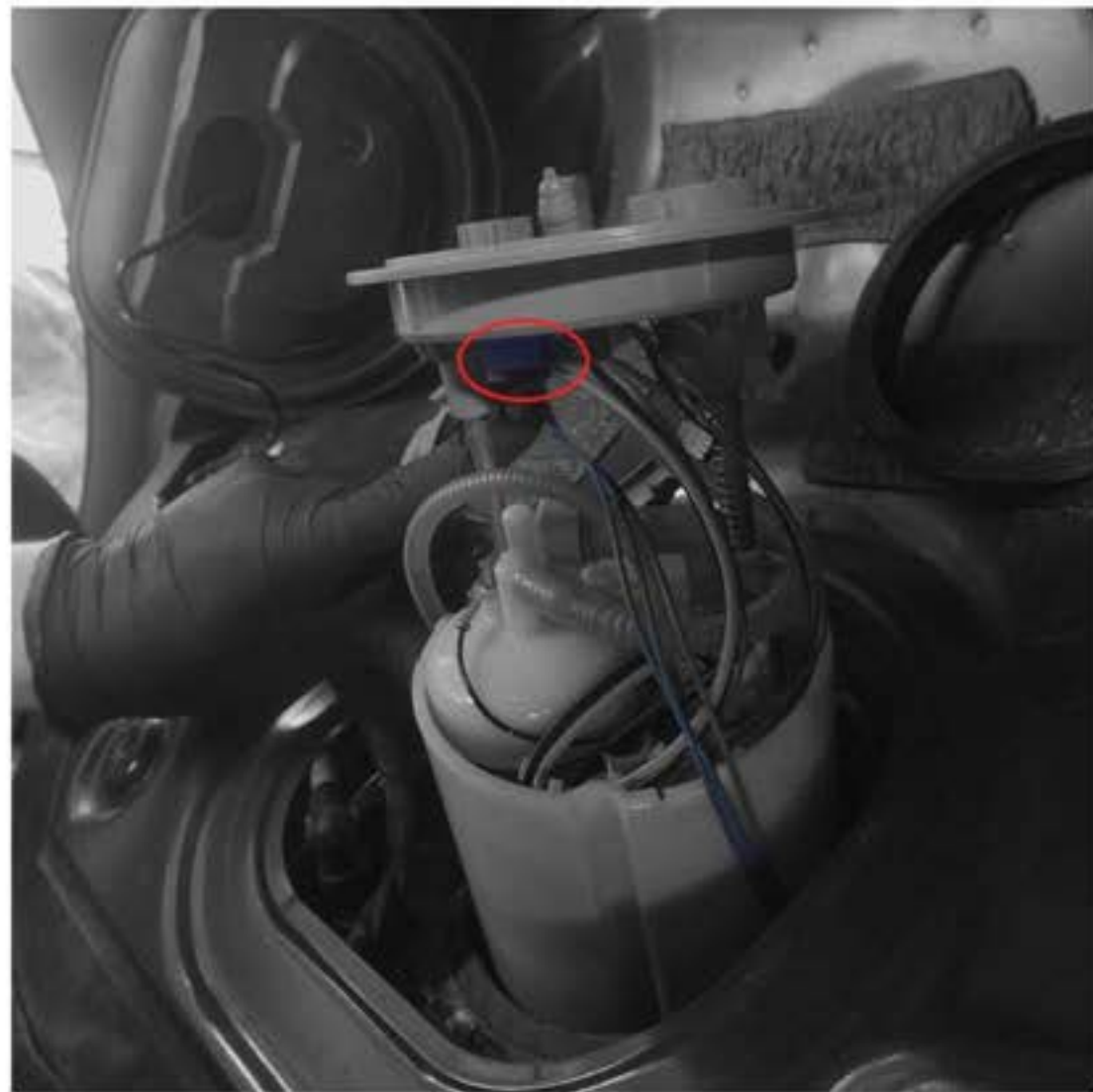




As shown from the image



Remove the plug from the bottom of the fuel pump cap



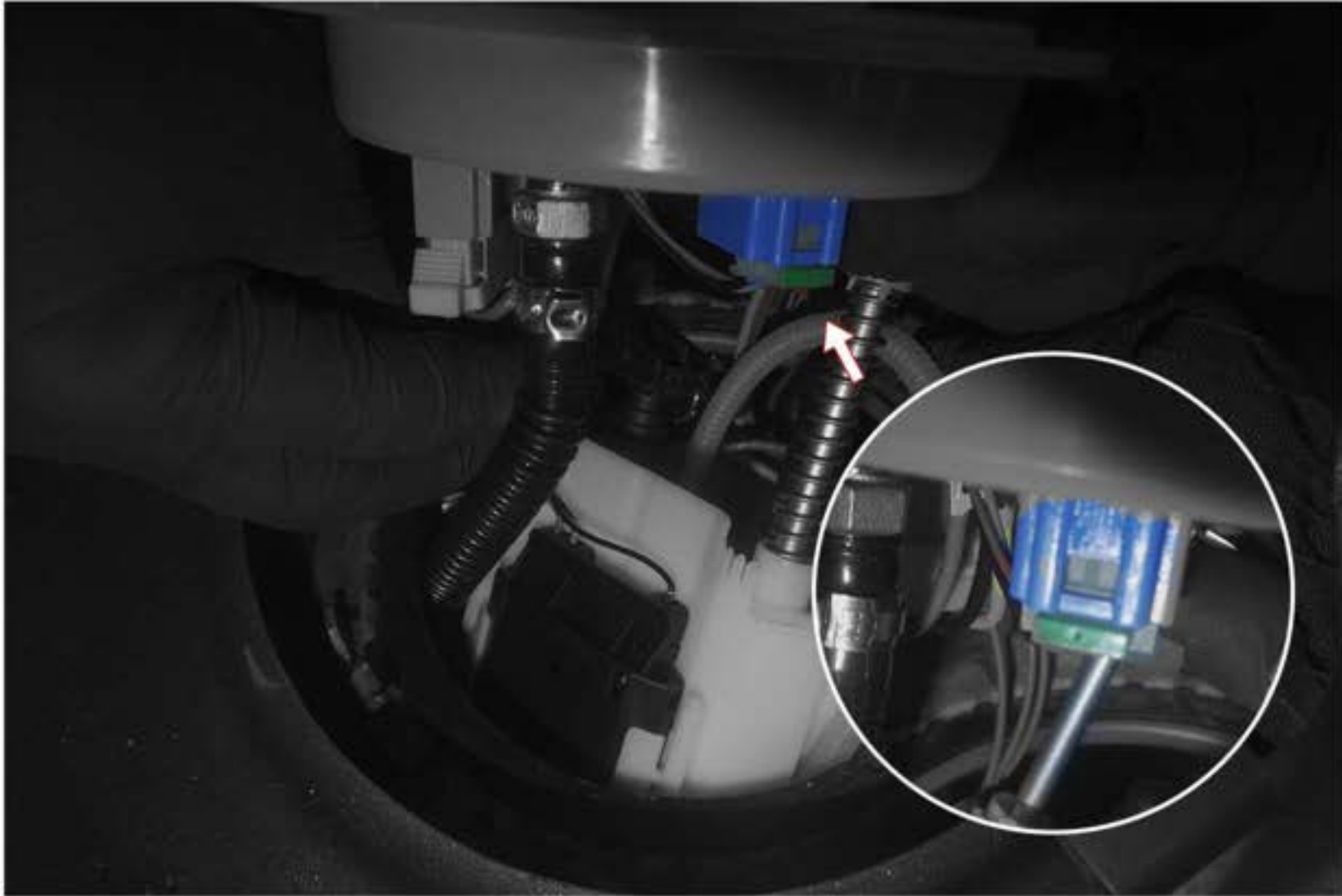


Take the fuel pump out and remove the two hoses



Change the fuel pump
plug the two hoses
then put the fuel pump back into it





Put the plug back in



O Ring (component No.1)
goes back in first

Then fasten the clamping plate
(component No.2)





Connect the plugs and pipe back with fuel pump



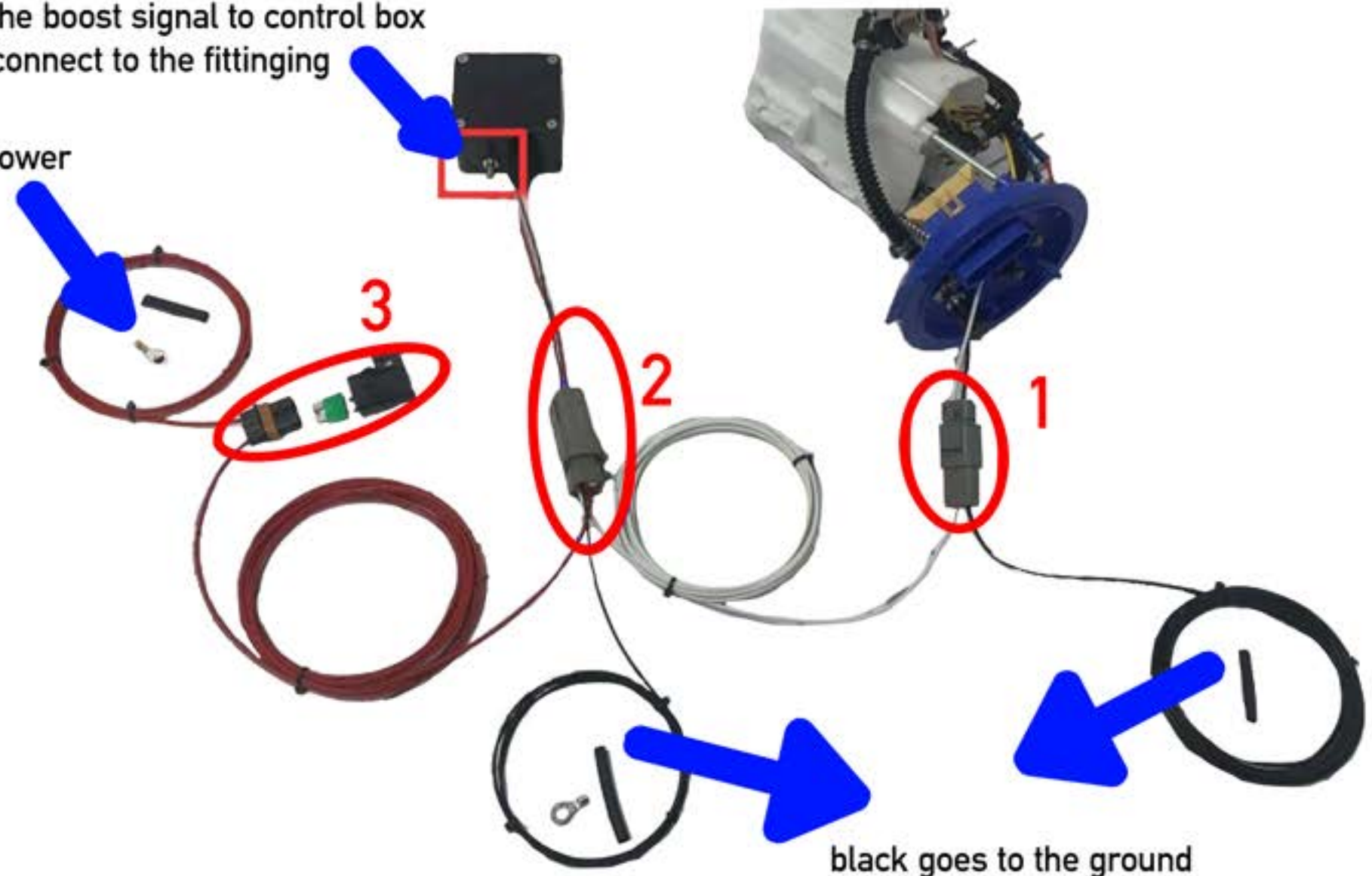
Put the plastic cap back to get it sealed



Wiring Option 1

run the boost signal to control box
and connect to the fitting

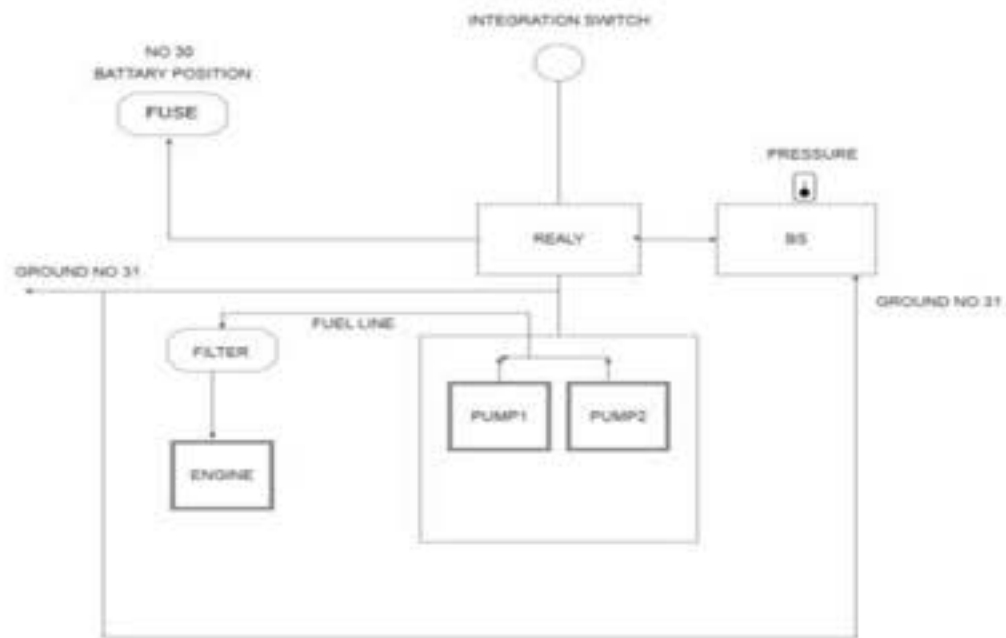
Red goes to the power



black goes to the ground



Connecting Circuit



[JIDY PERFORMANCE]			
DRAWN			
DRAWN	CHECKED	DATE	DRAWING NO.
24 01	01		01



Connect the two parts
as the picture shows in area 1

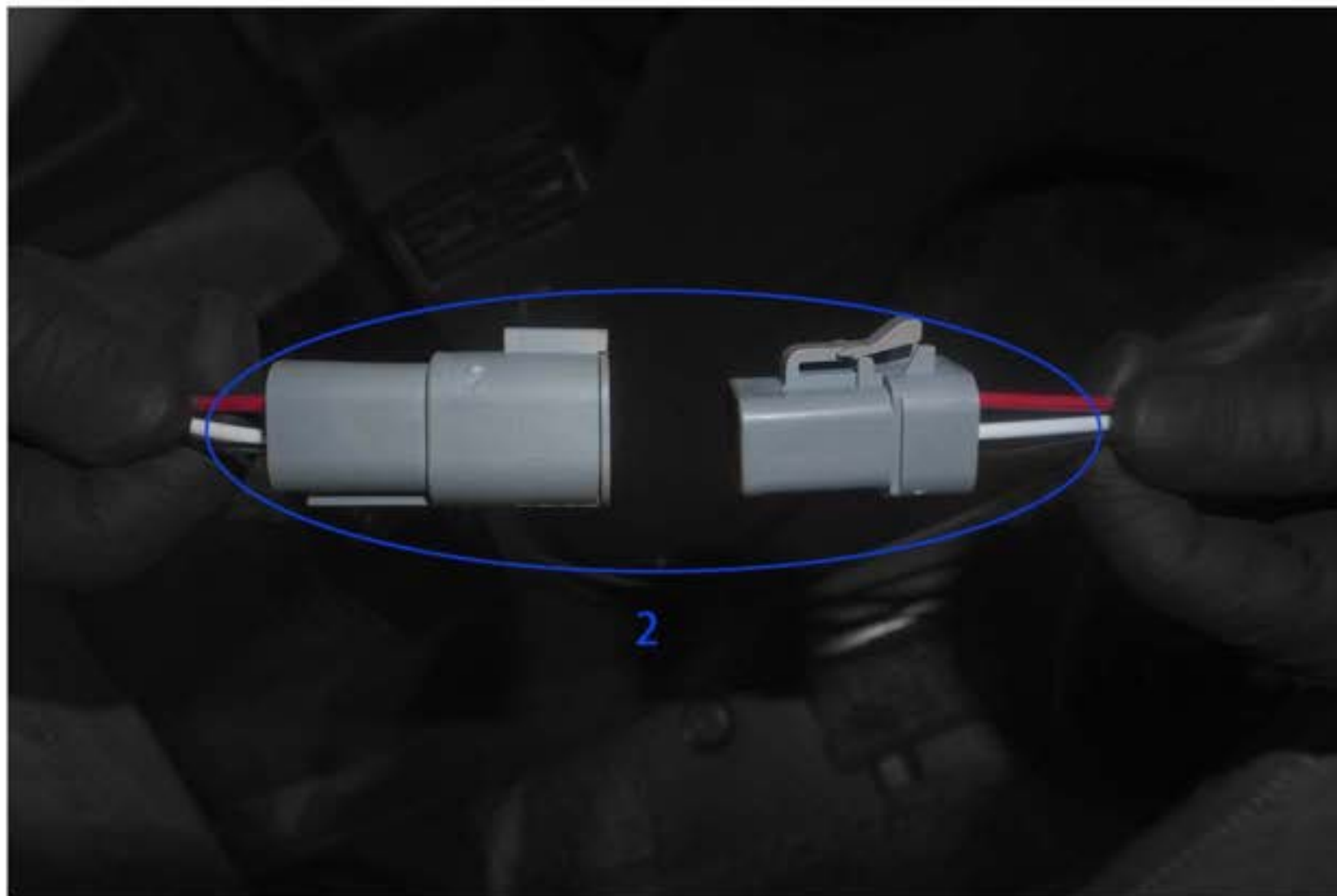


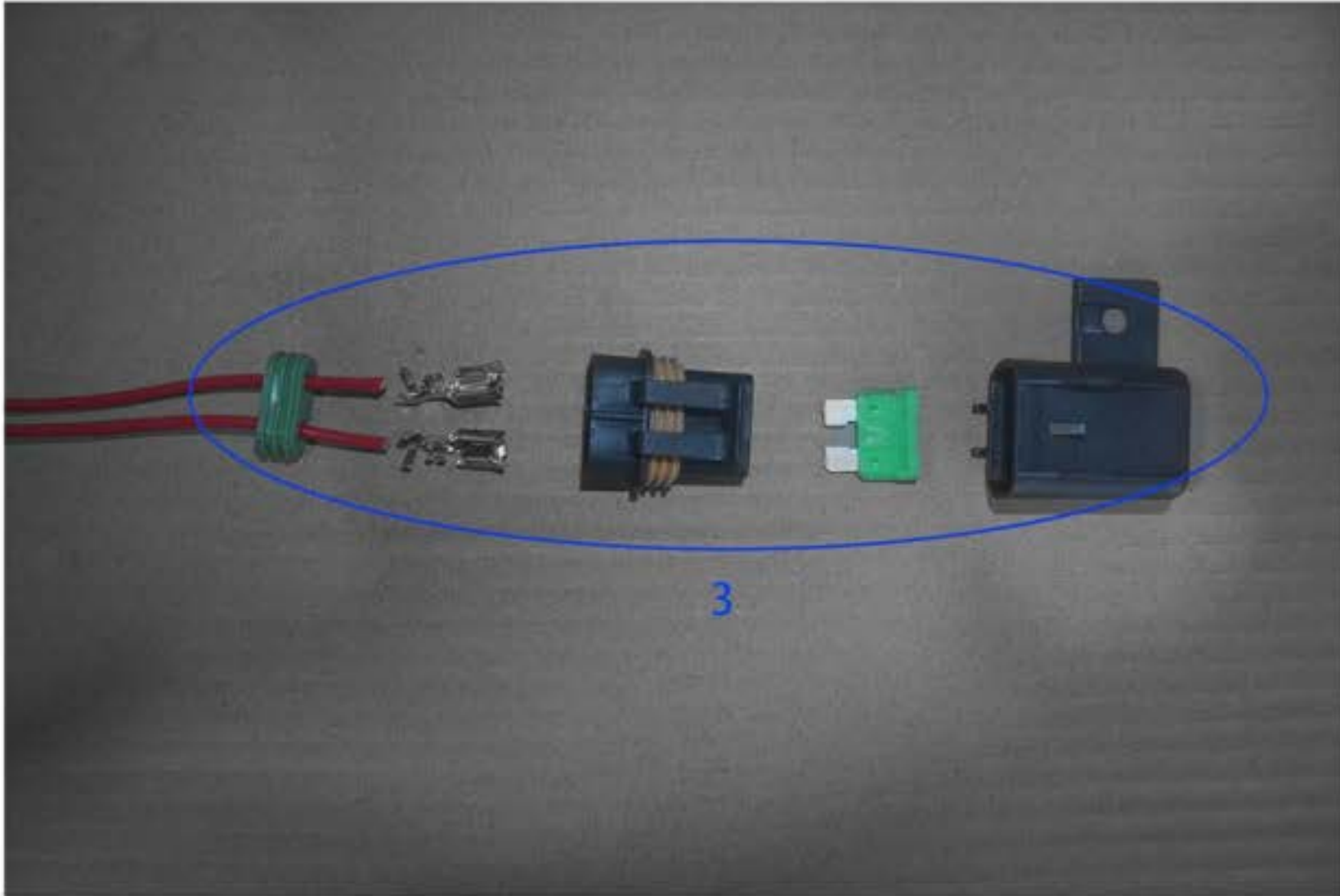


- 1.The longer red wire goes to port 1
- 2.The white wire to the fuel pump goes to port 2
- 3.The black wire with less length goes to port 3
- 4.Port 4 is already sealed up with no connection to be needed



Connect the two parts
as the picture shows in area 2

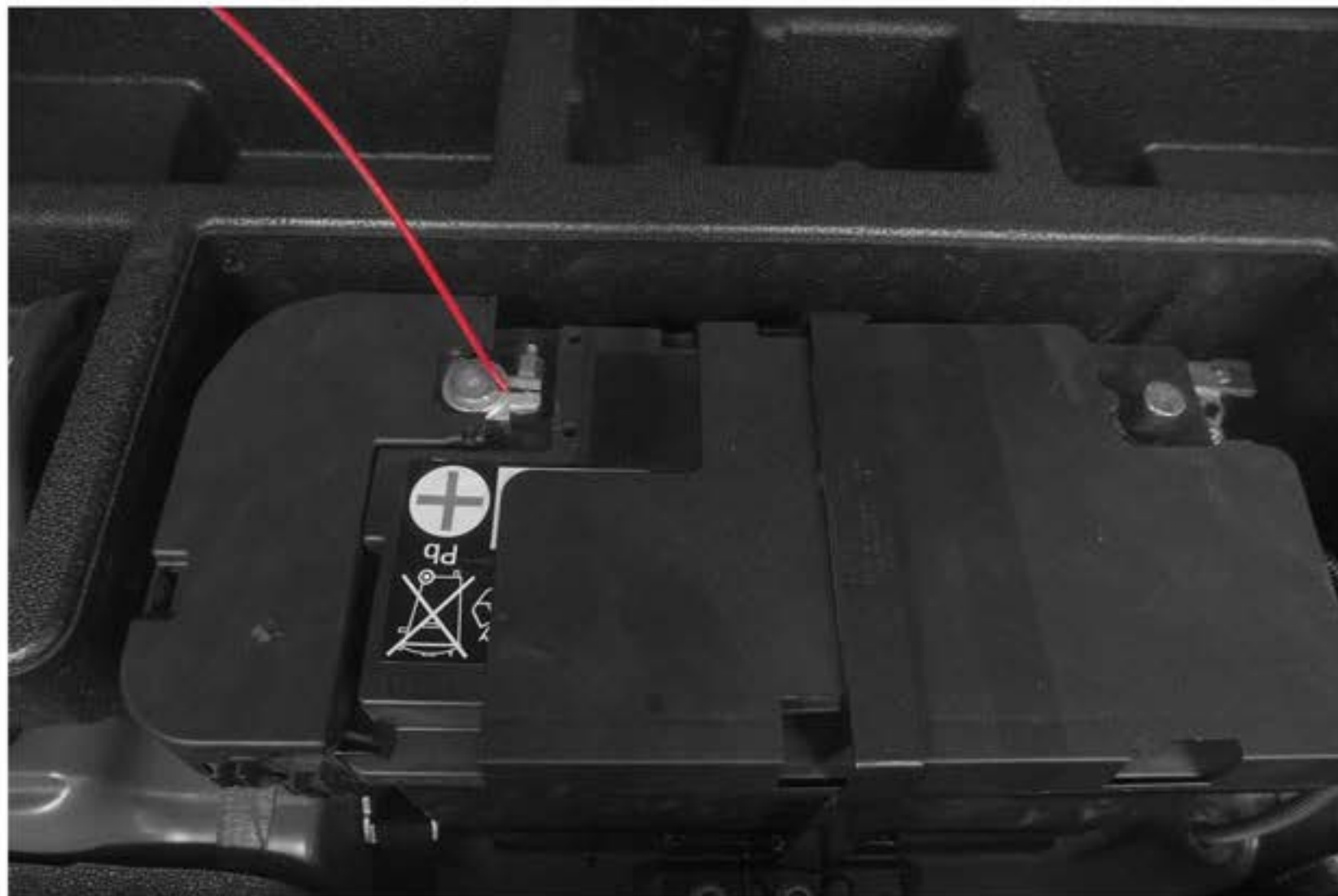




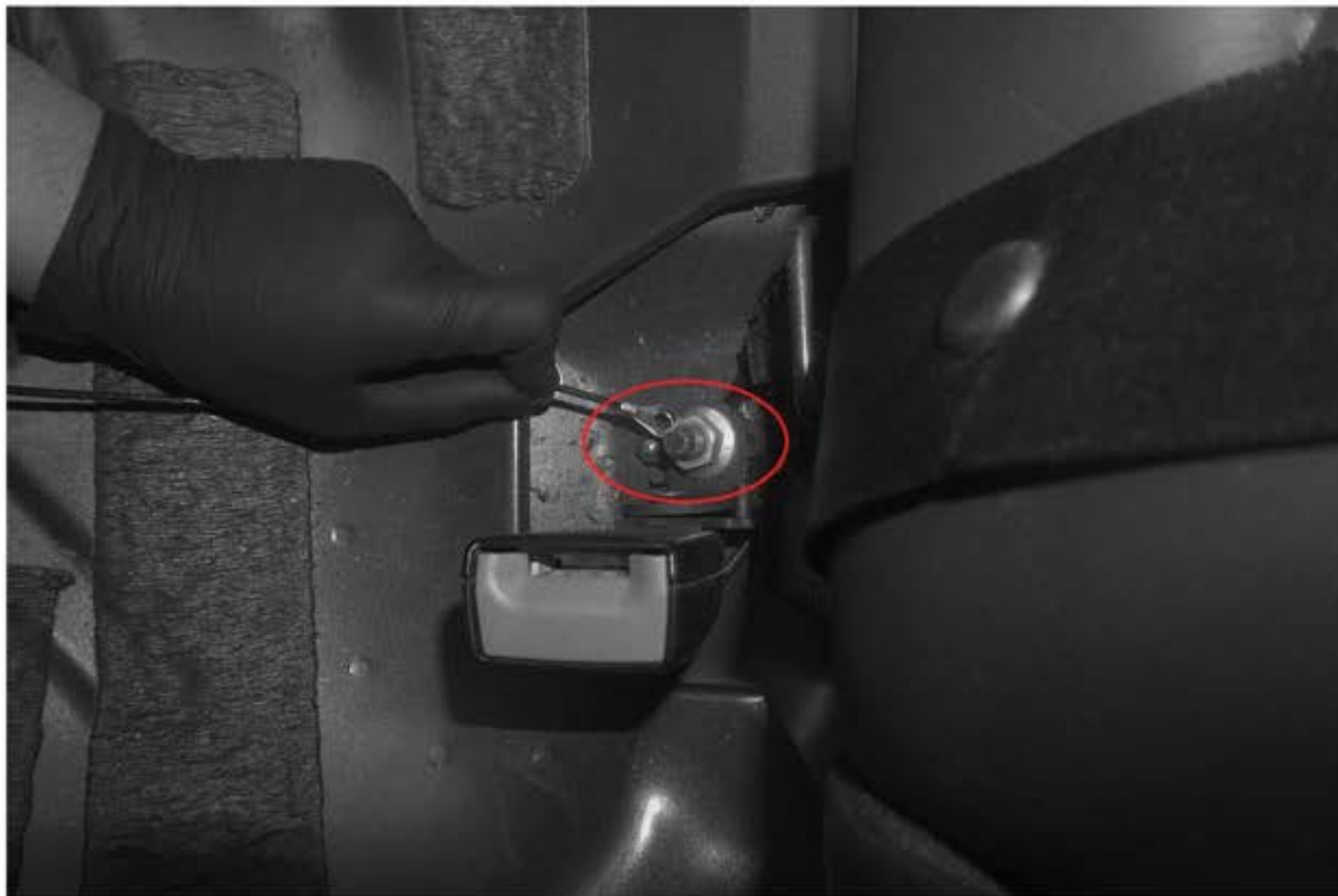
Two red wires should separately go through the components 3

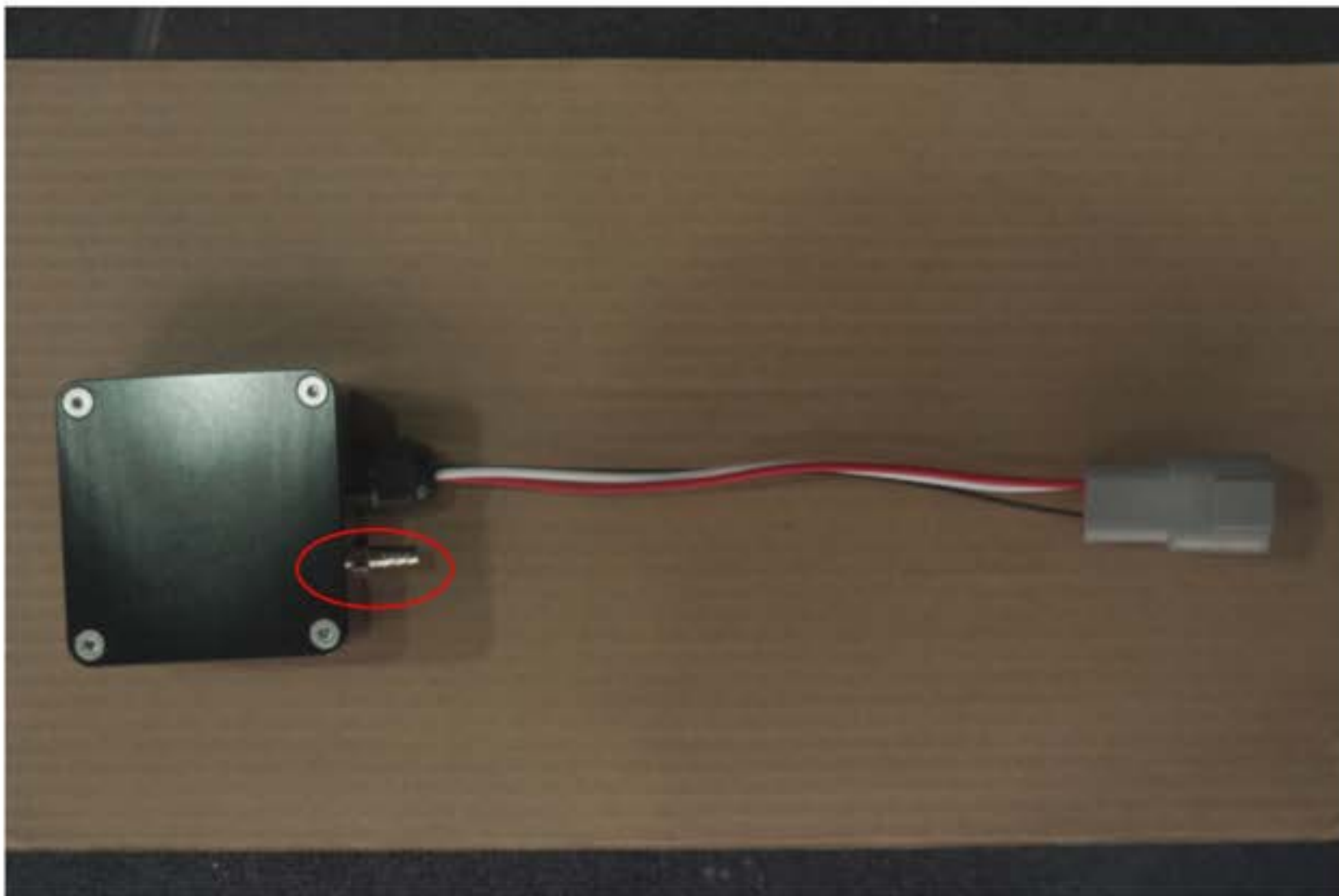
Put all parts together from left to right in order as what's displayed in the picture

The red wire with less length should be connected with the positive terminal of battery cell



Two black wires go to ground





Mount the control bar
in the driver foot well

Run the boost signal to the
control box and connect to the
fitting.





Install the 9.89mm-AN8 joint(component No.1)
on the 9.89mm joint of the fuel pump





As shown from the image



Install the AN8 90° joint
onto the 9.89-AN8 joint of the fuel pump

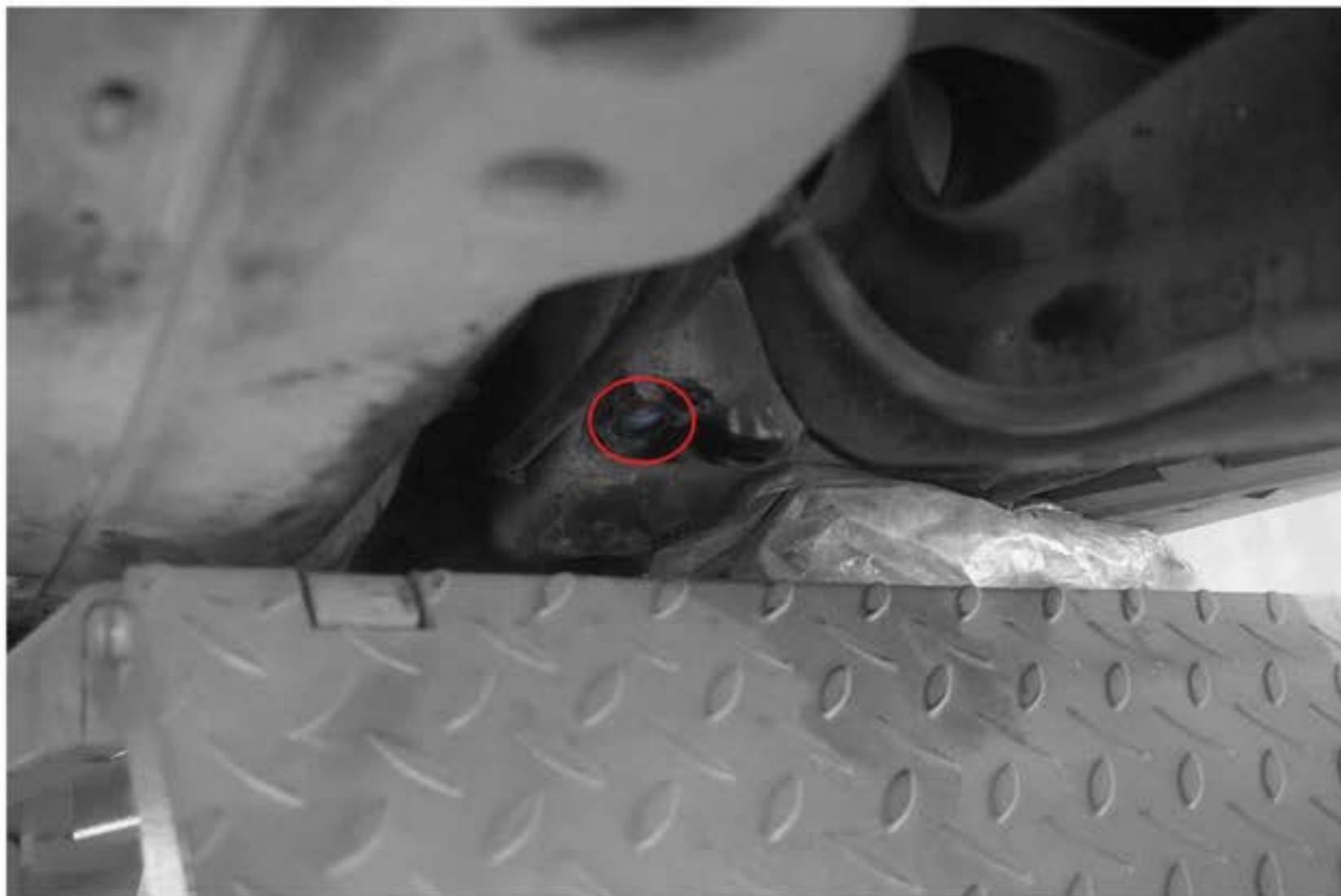




As shown from the image



Remove the 16mm screw
from the chassis





As shown from the image



Install the fuel filter and bracket(component No.6)
onto the port





As shown from the image



Install the AN8 120° joint
on the AN8 joint
at the inlet of the fuel filter





Install the AN8 straight joint(component No.3)
on the AN8 outlet



No.3 pipe goes all the way through the chassis



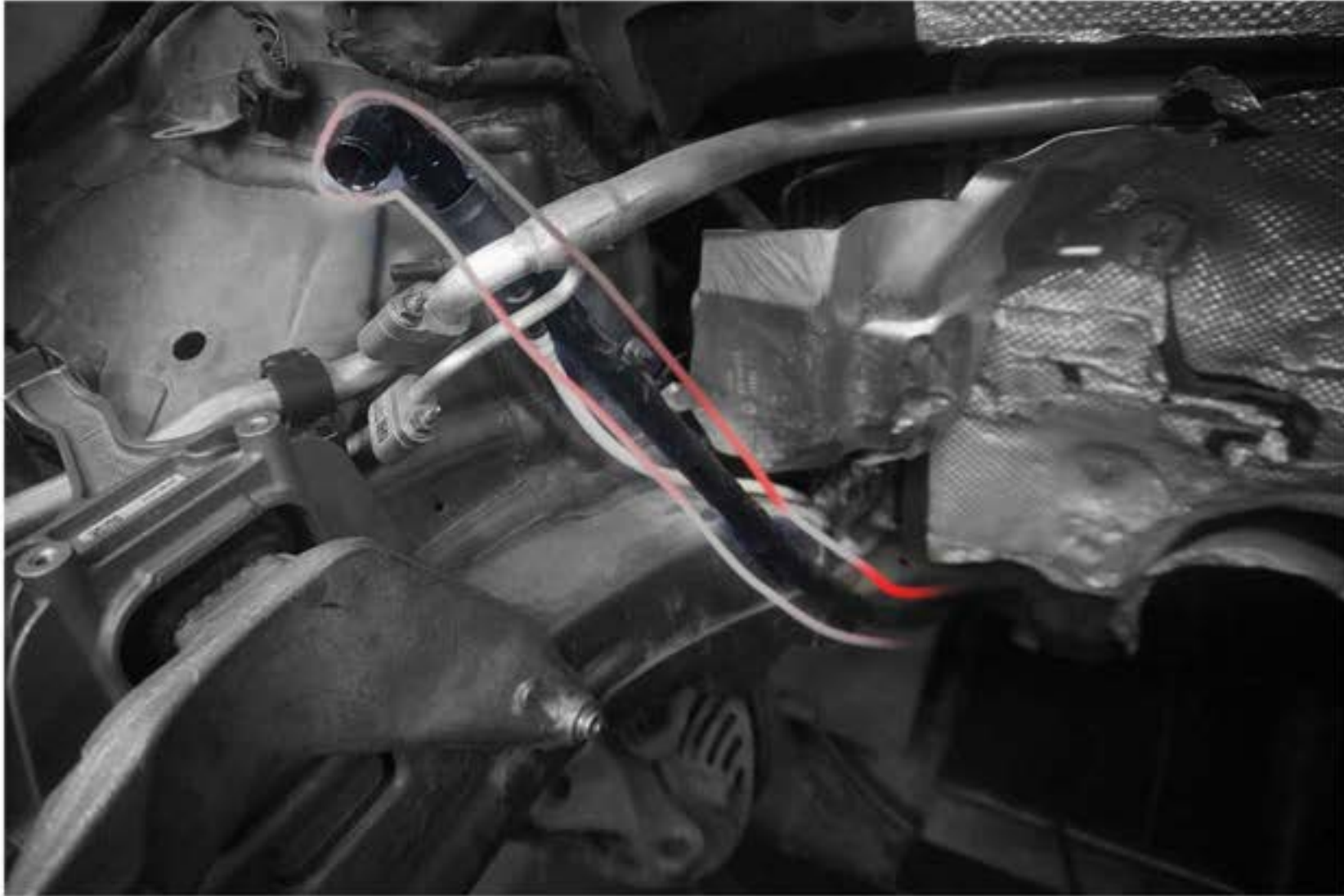


As shown from the image



As shown from the image





As shown from the image



90° AN8 joint goes into
the AN8 one-way valve
(NOTE: the direction of the valve
where the arrow goes)





As shown from the image



Fix the other end of No.4 hose onto the same place as where the original component installed

install the self-trimmed No.4 fuel pipe onto the HPFP and the aux rail

